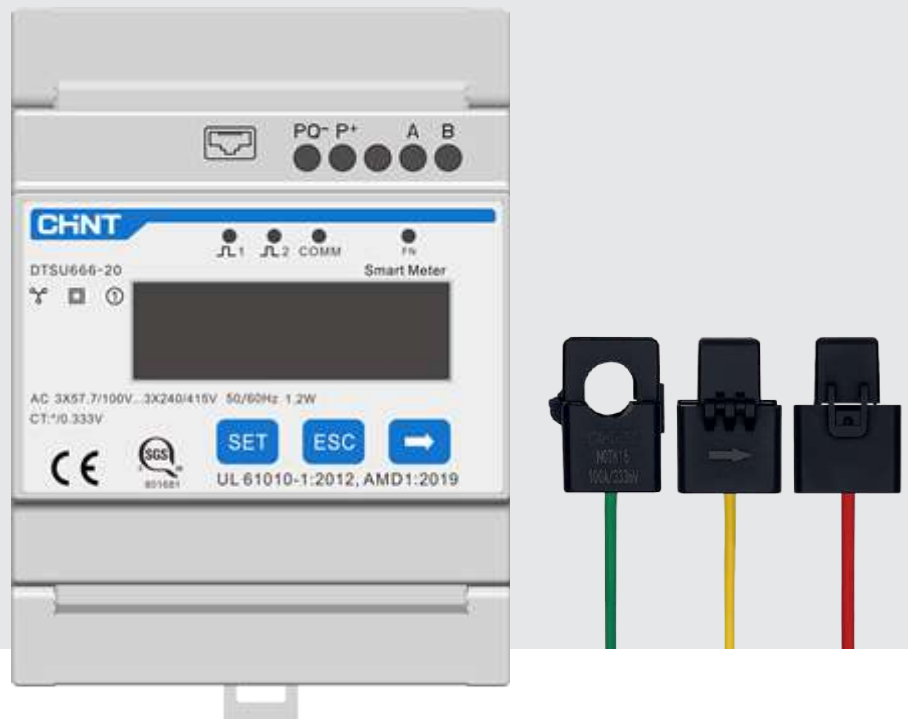


# DTSU666-20

## Accessories



Technical parameters	DTSU666-20
<b>Input</b>	
Rated voltage	230 Vac L-N / 400 Vac L-L
AC voltage range	50 ~ 280 Vac L-N / 85 ~ 485 Vac L-L
Measurement range	CT: 0 ~100 A or 0 ~ 250 A, Rogwski coil: 0~1000 A or 0~3000 A
Accuracy class	1 *
Power consumption	≤ 1.5 W (6 VA)
CTs available input no.	6
<b>Communication</b>	
Serial port	RS485 * 1, 9600 bps
<b>Protection and data storage</b>	
Insulation resistance	> 100MΩ
Overvoltage category	III
Data storage time	10 Years
<b>Ambient conditions</b>	
Operating temperature	-25 °C ~ 70 °C
Relative air humidity	≤ 75 % (non-condensing)
Max. operating altitude	≤ 2000 m
Protection class	IP20
<b>Mechanical parameters</b>	
Dimensions (W x H x D)	72 mm × 118 mm × 65.5 mm
Weight	800 g
AC connection	1 - 6 mm <sup>2</sup>
Comm. connection	0.2 - 1 mm <sup>2</sup>
Mounting type	35 mm Din-rail mounting
Certificate compliance	EN61326-1, EN61010-1

Technical parameters	CT
<b>CT** specification</b>	
CT type	Split Core
Max. input current	100 A or 250 A
Output voltage	333 mV
Cable lengths	6 m
CT model	ZTY6.176.532 for 100 A, ZTY6.176.533 for 250 A

\* Measurement accuracy is determined by installation if use Rogwski coil.

\*\* CTs need to be ordered seperately, while for certain types of inverters, CTs are provided by default, please refer to inverters manual for details.